
WKS13VW (ORDER NO. 052490)

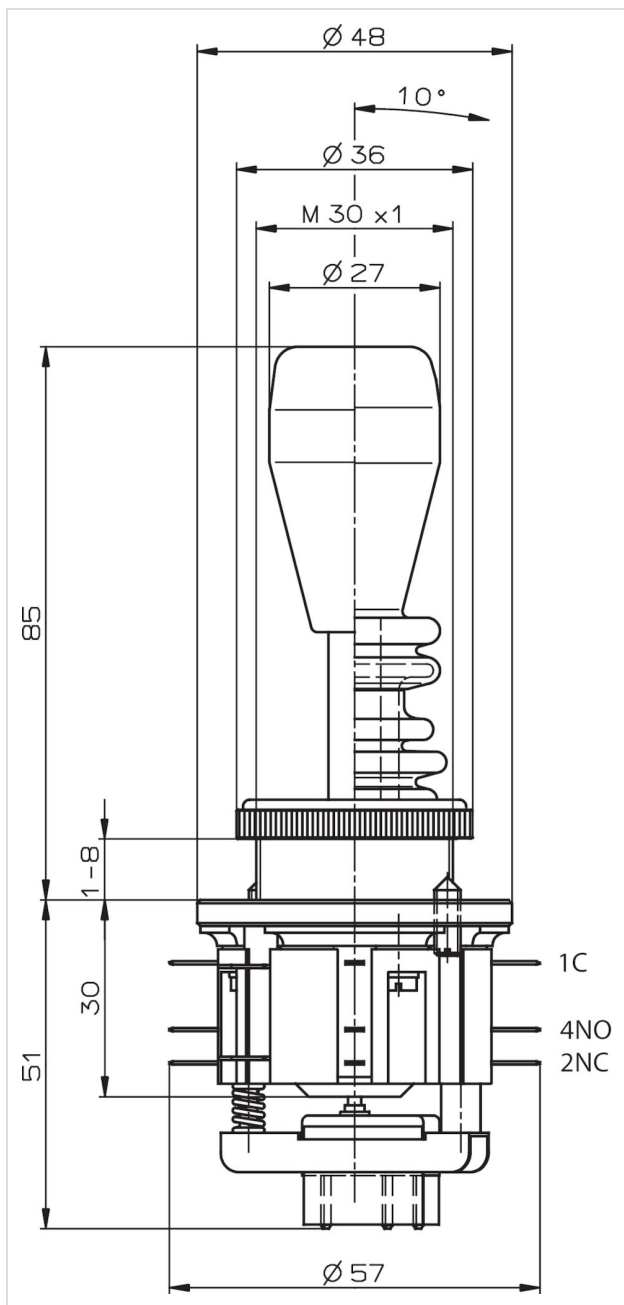
Series WK...

- ▶ Front panel installation according to IEC 947-5-1 D30
- ▶ Switch with actuating directions 1+3
- ▶ One changeover contact with tab connector 2.8 x 0.5 IEC 760 for each actuating direction
- ▶ Locking in central position
- ▶ Bellows

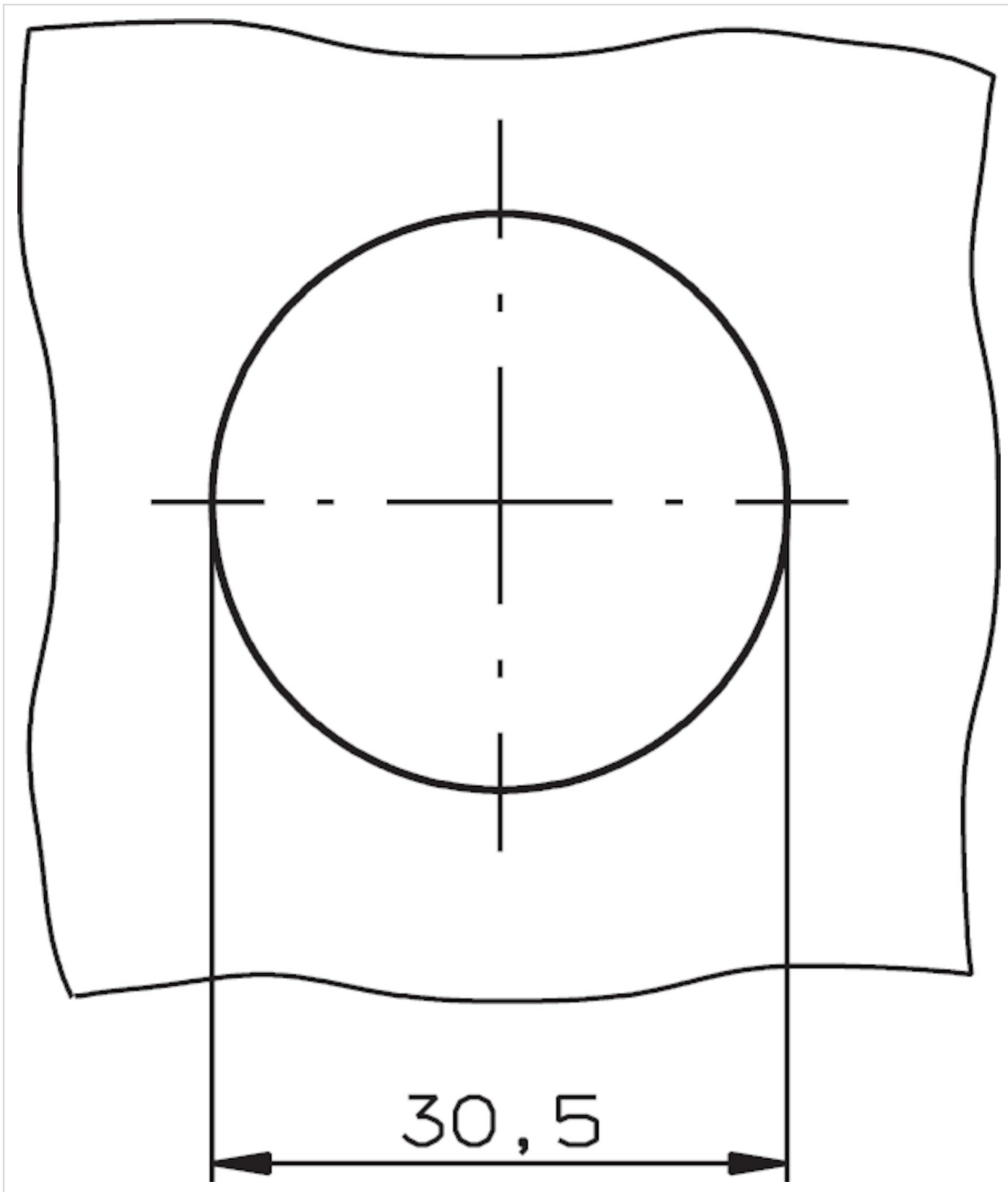


Description

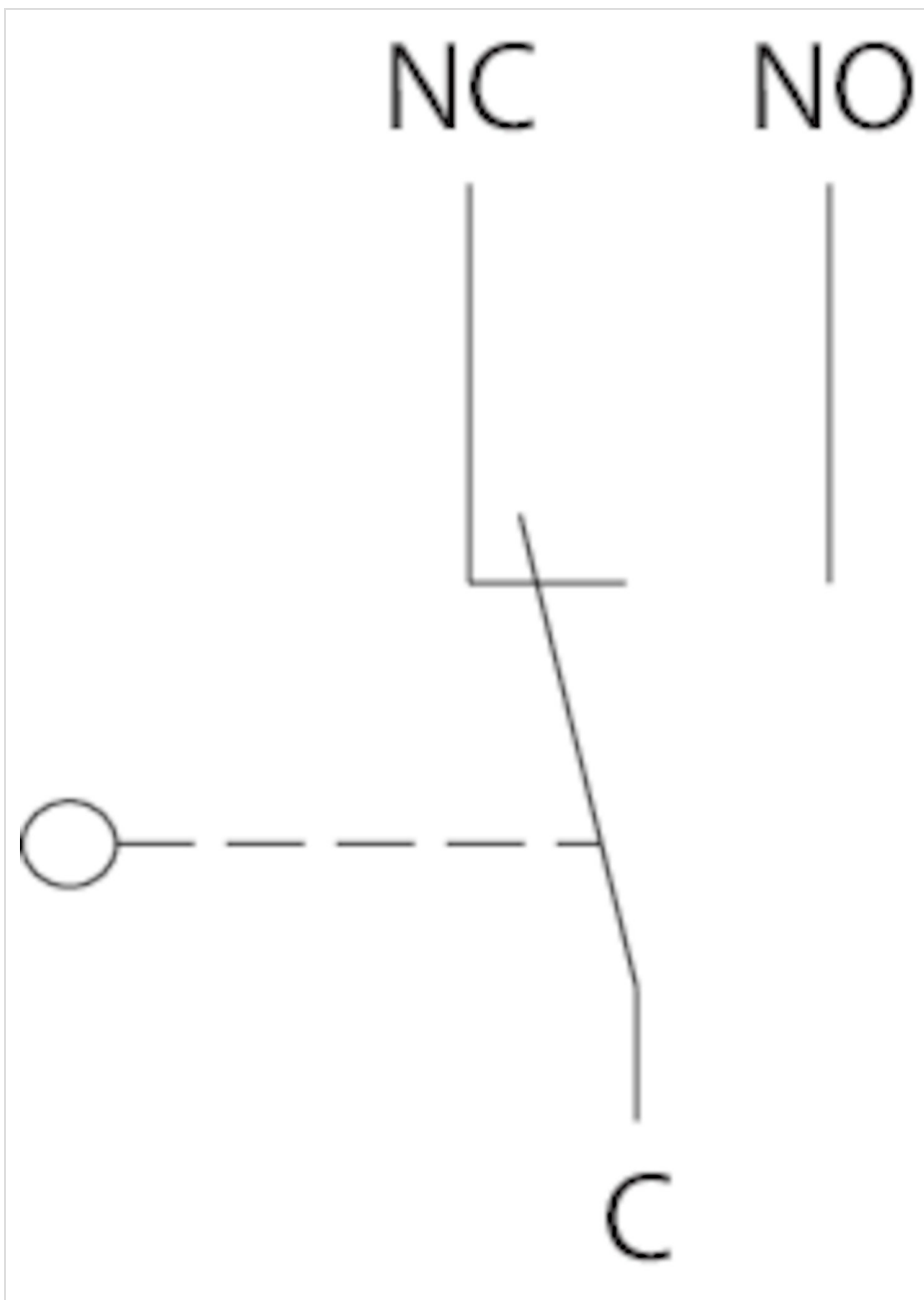
Dimension drawing



Dimension drawing



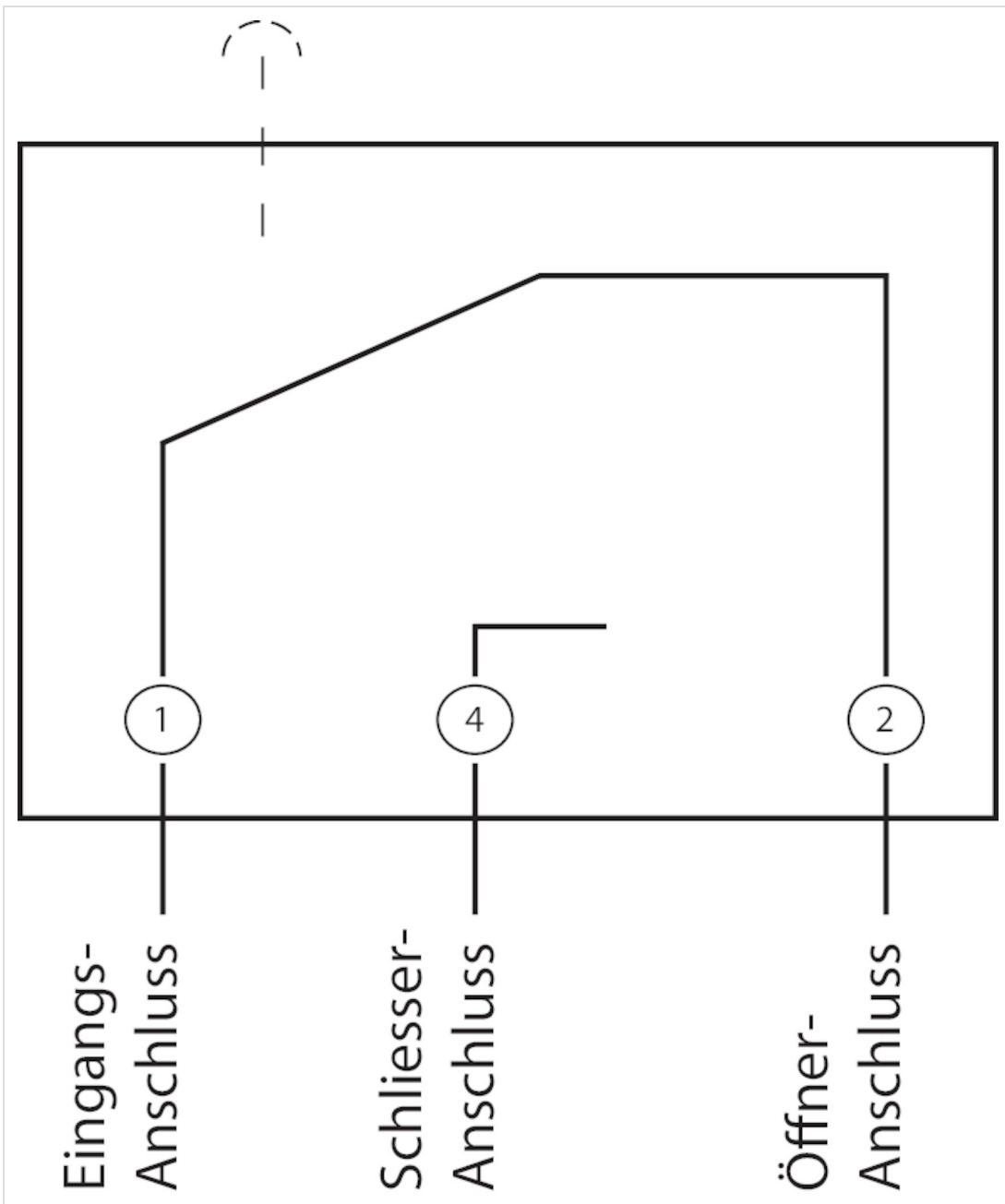
Wiring diagram



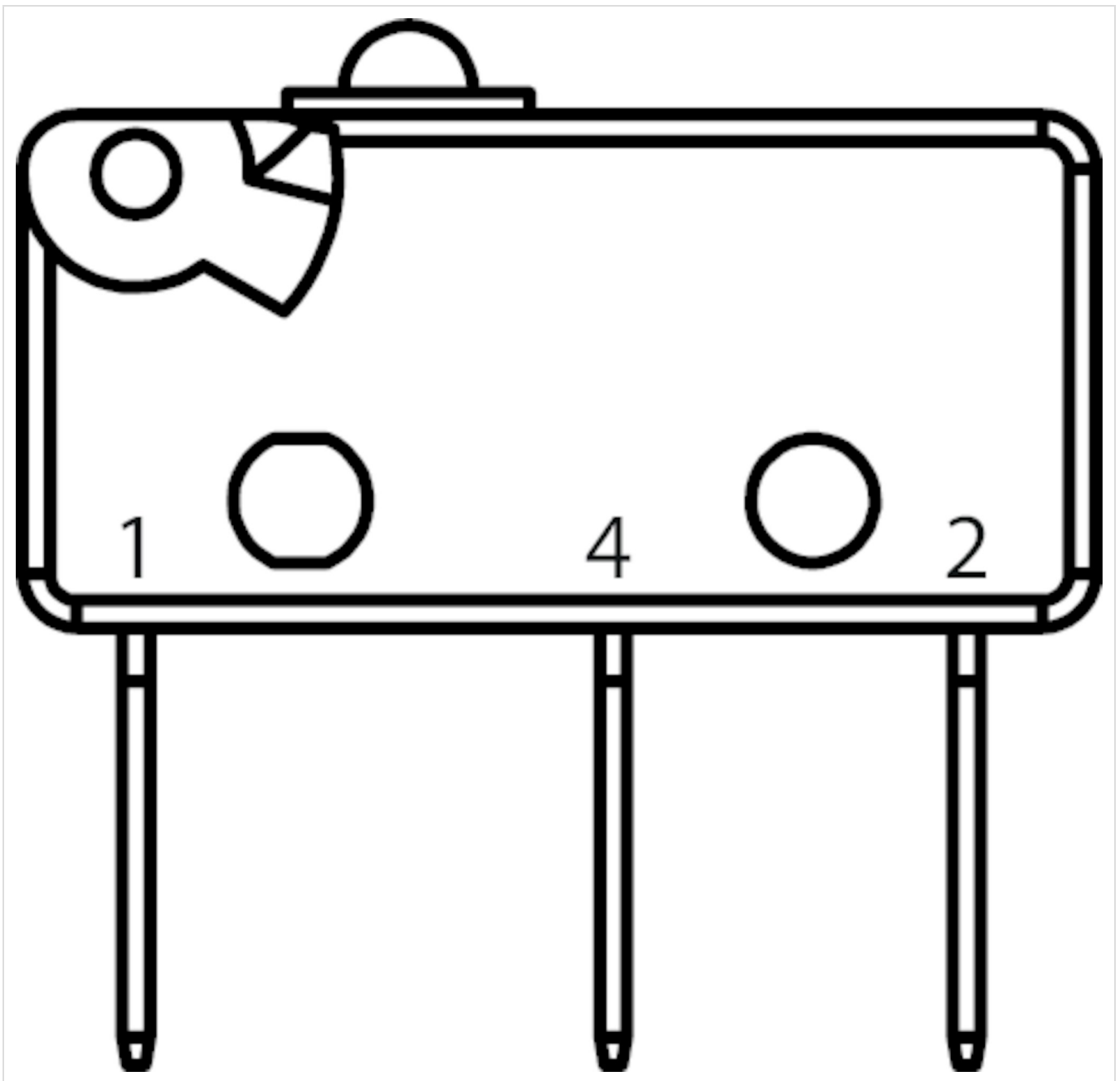
Wiring diagram



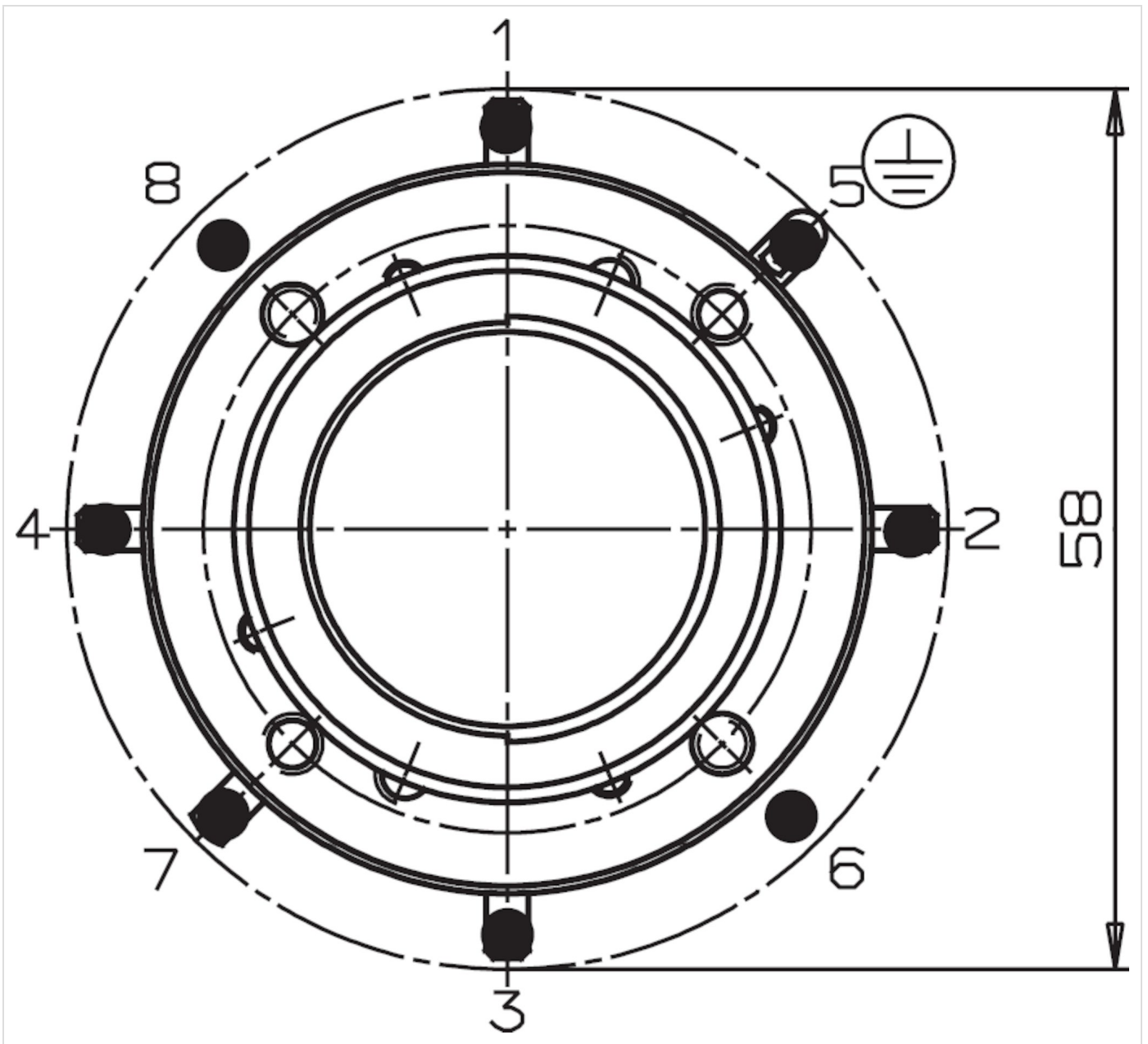
Wiring diagram



Wiring diagram



Switching functions



Technical data

Approvals



Mechanical values and environment

Material	
	Housing thermoplastic/aluminum
	Switching lever stainless steel
	Bellows elastomer black (PAK arm)
Weight	
	Net 0,17 kg
Ambient temperature	-25 ... 65 °C Latching version
Degree of protection	
	on the front with bellows IP65
Mechanical life	1 x 10 ⁶
Contact material	Silver alloy
Switching principle	changeover contact C IEC 947-5-1 (Snap-action contact element, design ES584)
Mounting method	IEC 947-5-1 D30 ((Bore 30.5))
Number of monitoring contacts	2 (2 directions)
Connection	Tab connector 2.8x0.5 IEC760
Actuating directions	2 (2 switches)

Electrical connection ratings

Utilization category acc. to EN 60947-5-1

	AC-15 230V 4A
	DC-13 24V 2A
Short circuit protection according to IEC 60269-1	Slow-blow T6 / quick-blow F10
Rated insulation voltage U _i	250 V
Rated impulse withstand voltage U _{imp}	2,5 kV
Switching voltage	min.10 V
Switching current	(at 24V) min.12 mA

Other

Additional feature

	Bellows
	Comment: Interlocking

Contacts

🏠 EUCHNER GmbH + Co. KG
Kohlhammerstraße 16
70771 Leinfelden-Echterdingen

☎ +49 711 7597-0

📠 +49 711 753316

✉ info(at)euchner.de

